

About The Signature Portfolio

The John Wieland Homes and Neighborhoods Signature Portfolio is a distinctive collection of new home designs meticulously refined through the experience and expertise of our dedicated architectural design team. This diverse group of exceptional new homes offers the best in luxury living for your lifestyle with thoughtfully-crafted spaces that live easily and beautifully, unique architectural details that distinguish and define and an array of personalized options from which to choose to shape your new home exactly the way you want it. Blending innovation and timeless excellence, the Signature Portfolio represents the leading edge of new home design today.



The Brunswick

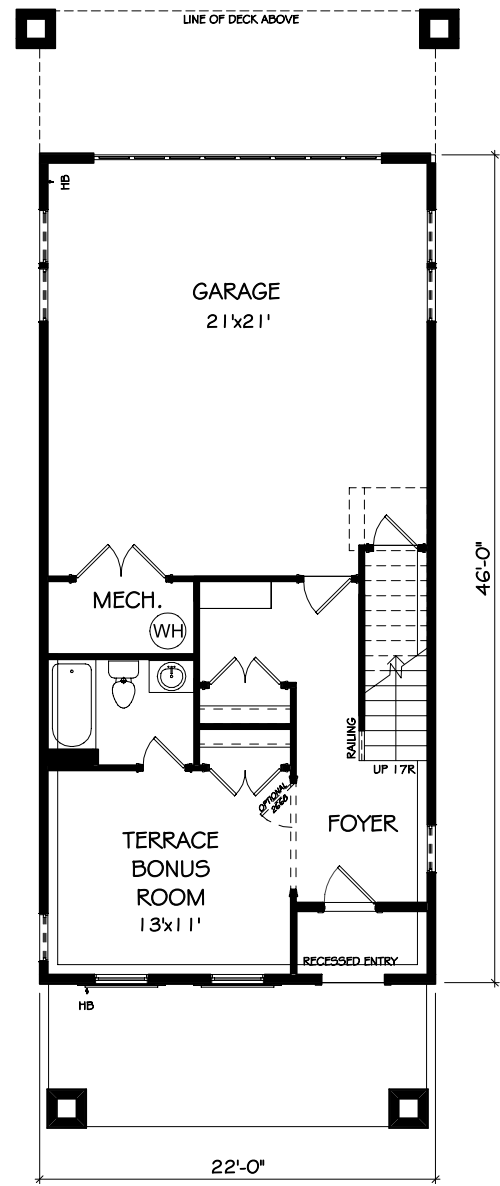
2400+ Square Feet • 4 Bedrooms, 3½ Baths

Explore more Signature Portfolio designs at jwhomes.com.

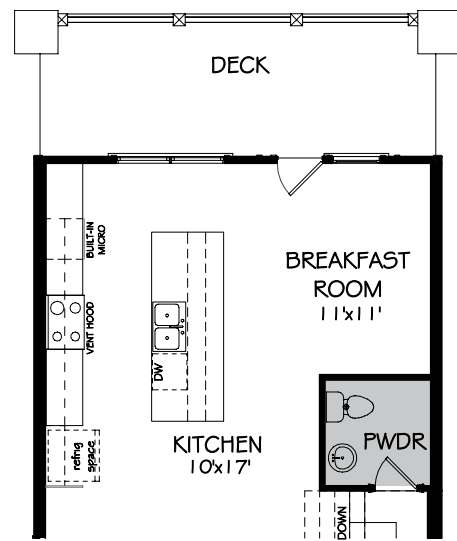
John Wieland
JOHN WIELAND HOMES
AND NEIGHBORHOODS

Discover the best in lock-and-go living in The Brunswick, a bright open plan designed for the way you live. Entertain with ease from the cook's kitchen with sweeping views of the keeping, dining and great rooms. Upstairs the owner's suite is a private retreat with large walk-in closet connected to large spa bath. Two additional bedrooms on this floor provide plenty of space for everyone. The terrace level offers even more flexible space with a bedroom and full bath.

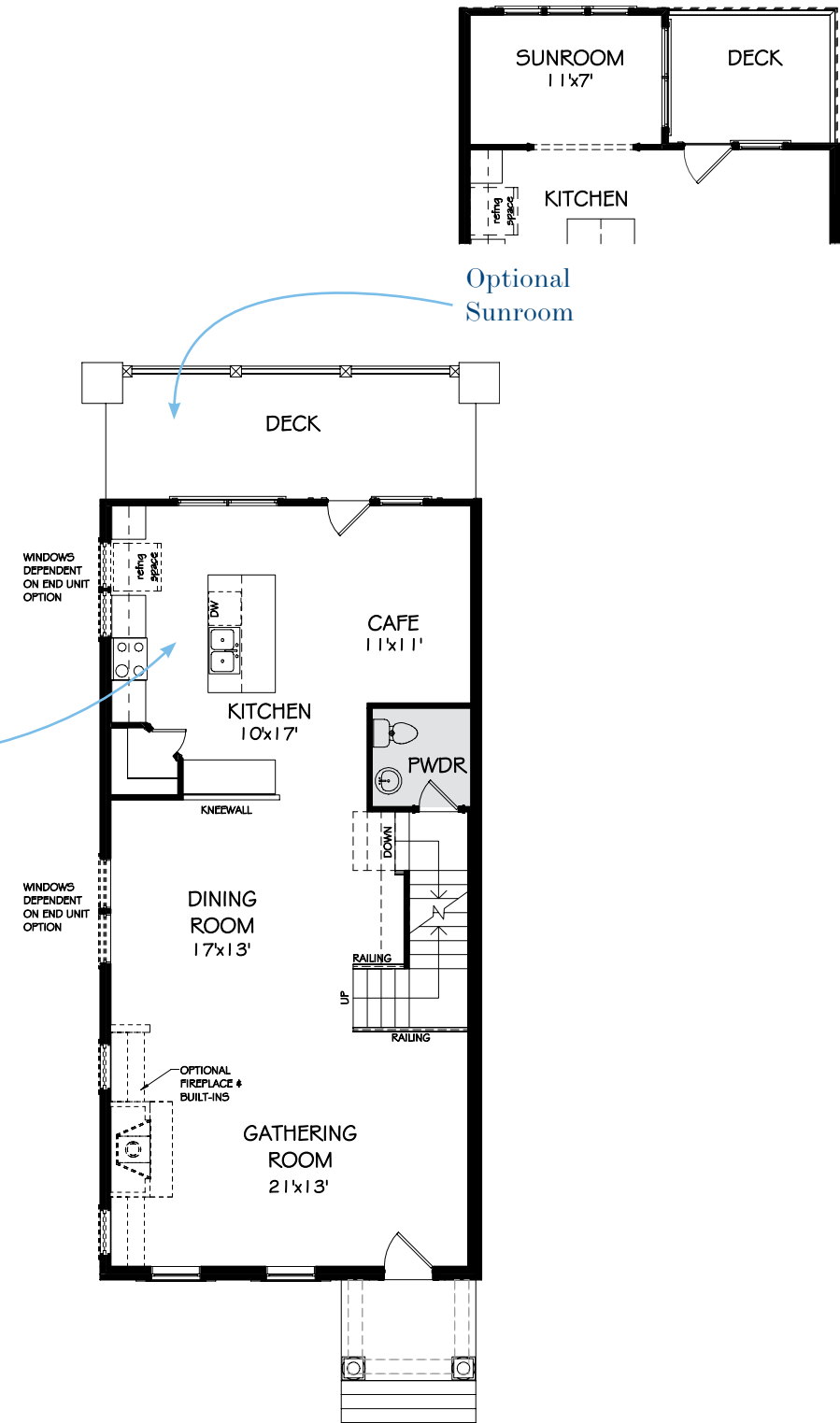
John Wieland
JOHN WIELAND HOMES
AND NEIGHBORHOODS



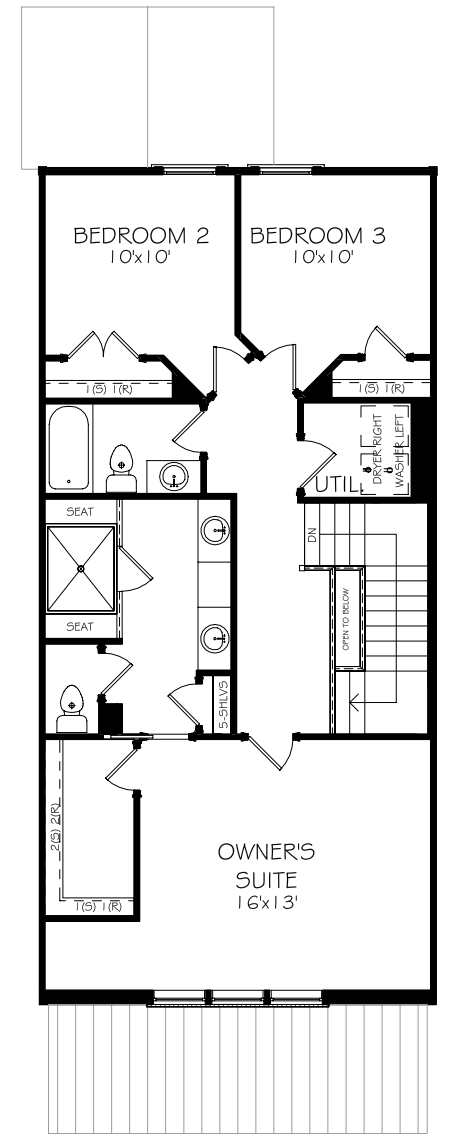
Terrace Level



Optional Contemporary Kitchen



First Floor



Second Floor