



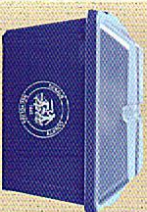
Special Items Collection Procedures

All Special Items are pre-paid, and must have a Special Collection Authorization Form - signed by the resident - in order to have service provided by the Sanitation Department. Special

Items include: improperly prepared yard debris; dead animal collection, automobile tires, construction and demolition materials; rocks, dirt, concrete, wood and metal fences, decking, etc.; and/or certain types of other materials not identified. These special items are collected using specialized vehicles and are not included in the annual residential assessment fees. Yard debris collection (improperly prepared) consists of material that has not been prepared as described in this brochure. The minimum fee for special collections of yard debris is \$50. For larger amounts, the fee is \$100 per collection vehicle load. Residents are encouraged to properly prepare all yard debris to utilize normal collection procedures and avoid having to pay the additional fee for Special Item Collection. Dead animal collection is for family pets only. The dead animal should be bagged twice and tied twice in durable plastic bags and placed at the curb for collection. The resident will need to call or email for a Special Item Collection service. The fee for dead animals properly bagged and placed at the curb is \$5 for each animal. Tires - the fee for passenger tire collection at the curb is \$2 each. The resident may place a maximum of four (4) automobile size tires at the curb for special collection. Construction & Demolition (C&D) material will only be collected at a resident's home by contracting for roll-off container service. The resident or business will need to sign a hold-harmless agreement and pre-pay services. Please note other fees include:

Roll-off containers which must be placed on the residential property and not on the County right-of-way. The fee for this service is \$12 per cubic yard and must be pre-paid prior to delivery. The customer may select a 10 thru 40-yard Open-top container to meet their individual service needs. Rocks, dirt, concrete, fences, and decking may be collected using a roll-off container as described above. If the resident does not have large amounts of these materials, they are encouraged to haul this material directly to the Seminole Road Landfill. Disposal Fee at the landfill is \$33 per ton for these C&D type or similar type materials. Other special handling services are collected at a fee base of \$50 minimum or \$100 per truckload, and are pre-paid.

Recycling Services



Residential Subscription Curbside Recycling
Our comprehensive recycling program allows residents of Unincorporated

Dekalb and the cities of Lithonia and Dunwoody to recycle a large variety of household materials conveniently. Subscription curbside recycling is a voluntary program available to all residents who presently receive solid waste collection services from Dekalb's Sanitation Division. **Initial Subscription Cost is \$30** which includes the blue bin, a box of blue bags, and weekly curbside collection service. The cost of additional recycling bags is \$15 per box of 100.

To Subscribe: In person, for application, or pay online - simply come by, call, or e-mail Sanitation Customer Service: (404) 294-2900 or sanitation@co.dekalb.ga.us.

Limited Recycling Opportunities



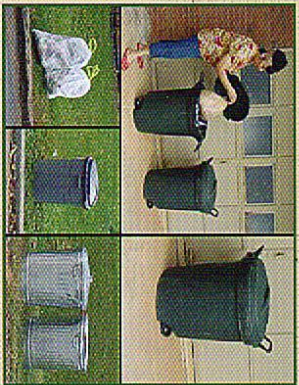
Place at curbside:
aluminum cans - the 1st collection day of the week, and newspaper - the 2nd collection day of the week.
Drop-off Sites: Mixed paper containers are located throughout Dekalb County.



RESIDENTIAL COLLECTION PROCEDURES

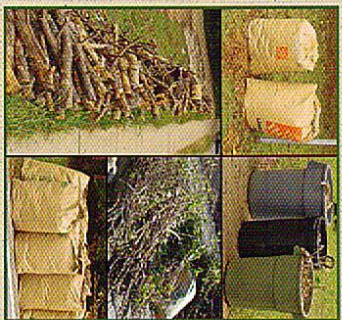


Dekalb County Sanitation



Household Garbage Collection Procedures

All Household Garbage must be placed in individual plastic bags that are securely tied. Household Garbage includes: food scraps, cans, bottles, paper cardboard, clothes, toys, etc., that otherwise would be considered litter as defined by the County Code Chapter 22 Solid Waste & Litter Control Ordinance. All smaller plastic bags must be placed in an approved 20 - 32 gallon receptacles. Approved receptacles include durable metal and plastic containers or durable plastic bags. Each container must have two durable handles with a detachable lid. Each plastic bag must be securely tied. All approved receptacles must be placed at the curb without blocking mailboxes, utilities, driveways, sidewalks, drainage systems, or roadways before 8:00 a.m. on the scheduled day of household garbage collection for your area. Containers must be returned to your home after collection. Containers may not stay at the curb for more than 24 hours for any reason.



Yard Debris Collection Procedures

All Yard Debris must be properly prepared for collection. Yard Debris includes: grass clippings, leaves, twigs, branches, limbs, tree parts, shrubbery, vines, garden plants, etc., and other naturally occurring vegetative matter. Grass clippings, leaves, twigs, shrubbery, vines, garden plants, and small items must be placed in approved 20-40 gallon receptacles. Approved receptacles include durable metal and plastic containers or durable biodegradable paper bags. Each container must have two durable handles. Each paper bag must be folded at the top to minimize rain deteriorating the paper bags. All approved receptacles must be placed at the curb without blocking mailboxes, utilities, driveways, sidewalks, drainage systems, or roadways before 8:00 a.m. on the scheduled day of yard debris collection for your service area. Branches and limbs must be trimmed of twigs, vines, and leaves and cut to a maximum of four (4) feet in length, and stacked neatly at the curb. The removed twigs, vines and leaves must be placed in an approved receptacle as outlined above. Trees must be cut up as small as necessary, where each piece does not exceed a maximum of 50 pounds. Large piles of yard debris not meeting the above restrictions can be scheduled for special pick-up, with the appropriate service fees. See Special Items Collection Procedures section of the brochure.



Bulky Items Collection Procedures

All Bulky Items must be properly prepared for collection. Bulky Items include: furniture, mattresses & box springs, household appliances, play ground equipment, lawn mowers, hand tools, accessories, etc., and/or other items classified as normal residential discards and throwaways. These bulky items are collected by special collection vehicles and are included in the residential annual assessment fees. Bulky items must be placed neatly at the curb and will be collected as rapidly as possible. Appliances with doors must be properly secured or removed. Lawn mowers and other accessories must have all gas, oil and lubricants removed prior to placement at the curb for collection. All bulky items must be placed at the curb without blocking mailboxes, utilities, driveways, sidewalks, drainage systems or roadways. Residents are encouraged to report bulky items (via phone or email) as soon as they have been placed properly at the curb for collection.

